

# DECOR

G A L L E R Y



EVROWOOD

• интерьерный декор •





## DECOR GALLERY

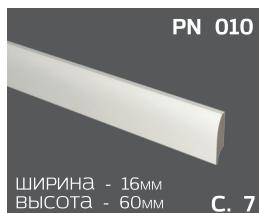
- эксклюзивный дистрибьютер  
EVROWOOD в регионе

### ПРЕИМУЩЕСТВА ПРОДУКЦИИ EVROWOOD:

- ✦ Производится из экологически чистого сырья
- ✦ Новизна и неординарность продукта
- ✦ Широкий модельный ряд
- ✦ Стильный и лаконичный дизайн
- ✦ Прочность и долговечность
- ✦ Влагостойкость
- ✦ Легкость резки и монтажа
- ✦ Производится в России на современном высококачественном оборудовании
- ✦ Для производства используются только высококачественный МДФ
- ✦ Контроль качества на всех этапах производства



## РАЗДЕЛ 1 НАПОЛЬНЫЙ ПЛИНТУС 6-18

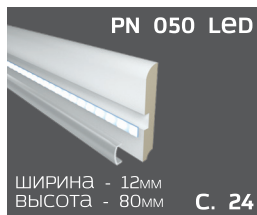
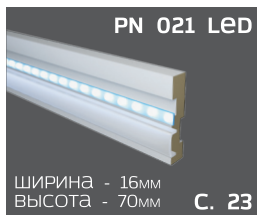


# СОДЕРЖАНИЕ

## РАЗДЕЛ 2 МОЛДИНГИ 19-21



## РАЗДЕЛ 3 ПЛИНТУС С LED ПОДСВЕТКОЙ 22-25



# СОДЕРЖАНИЕ

## РАЗДЕЛ 4 ПАНЕЛИ 26-29



## РАЗДЕЛ 5 ОБРАМЛЕНИЕ 30-31

## РАЗДЕЛ 6 КАМИНЫ 32-33

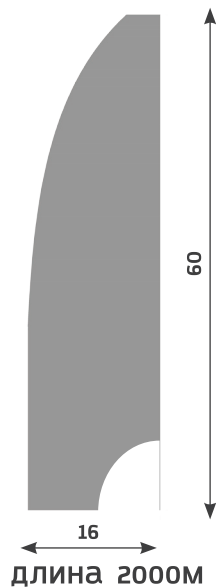
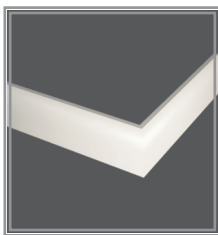
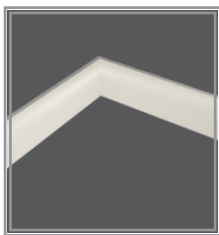
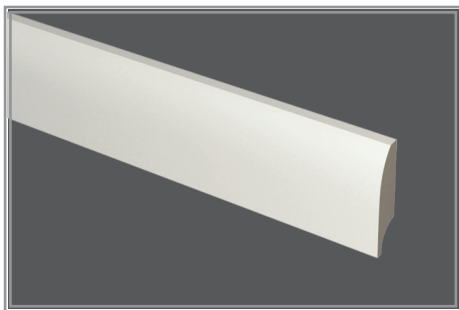


# НАПОЛЬНЫЙ ПЛИНТУС

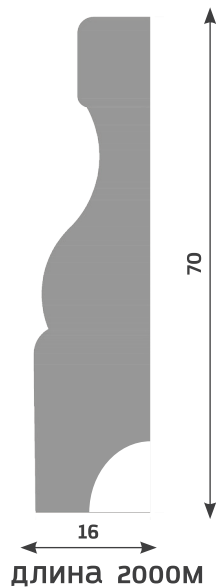
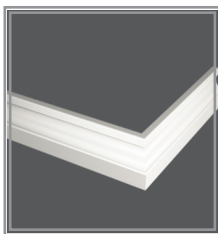
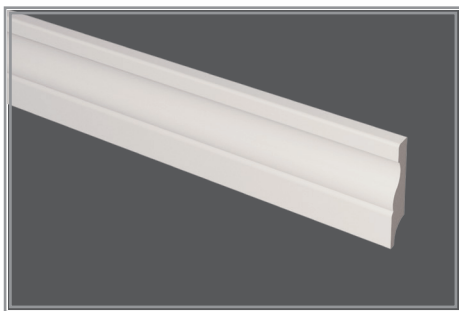
1



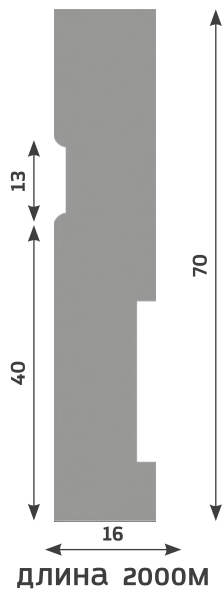
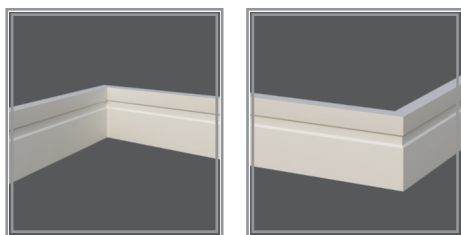
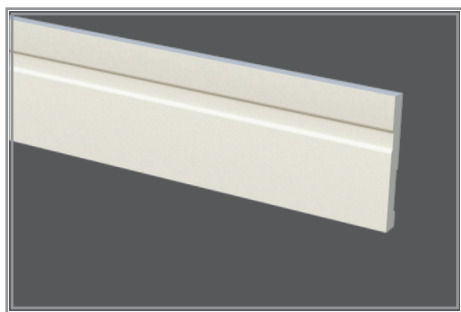
## ·PN 010



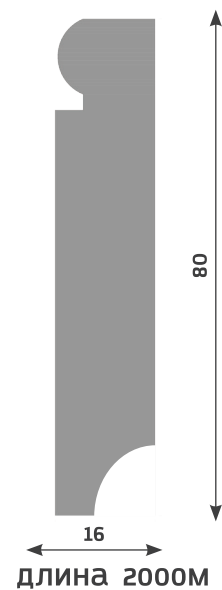
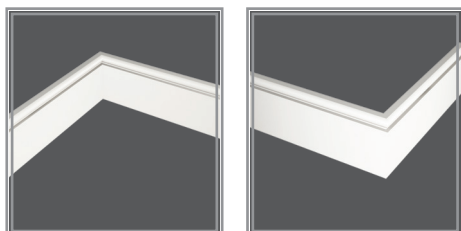
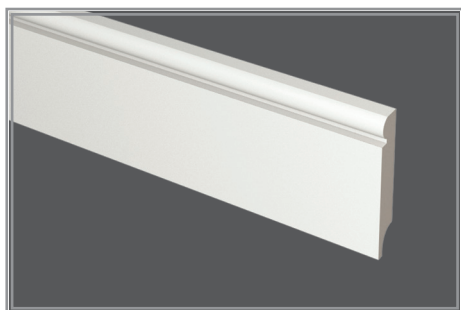
## ·PN 020



## •PN 021\* / \*ИМЕЕТ АНАЛОГ LED /

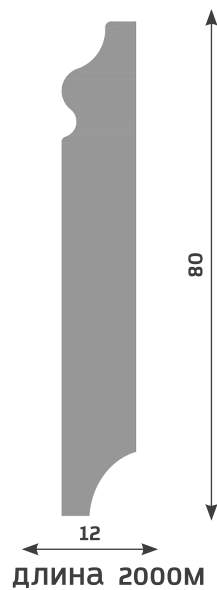
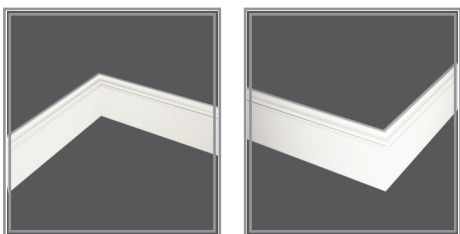
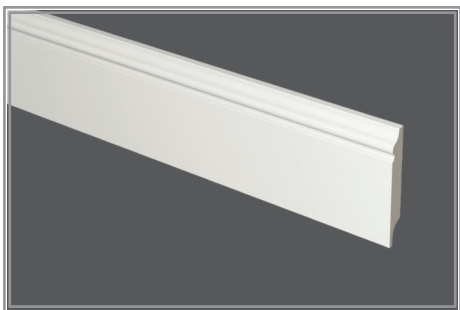


## •PN 030\* / \*ИМЕЕТ АНАЛОГ LED /

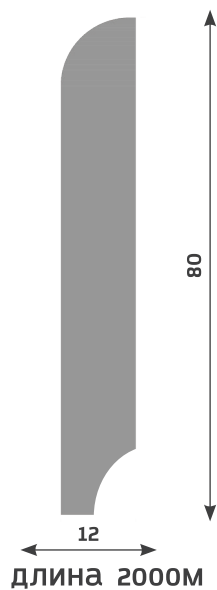
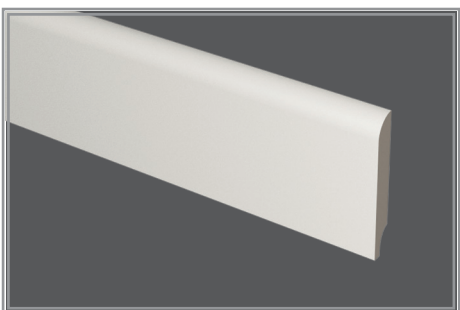




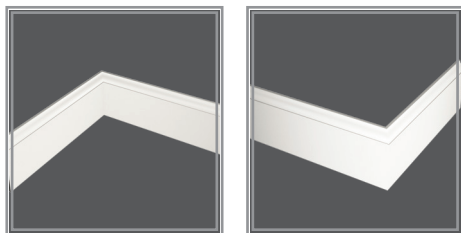
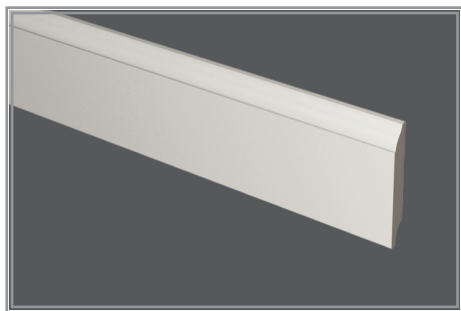
## ·PN 040



## ·PN 050\* / \*имеет аналог LED /



## ·PN 060



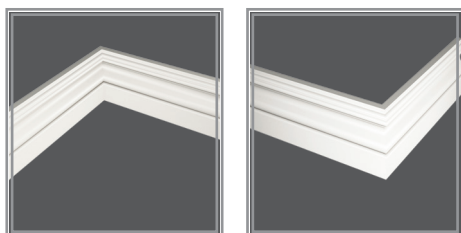
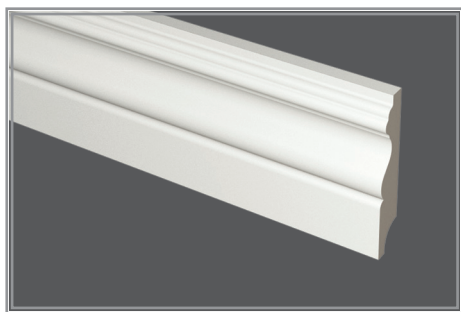
83

12

длина 2000М



## ·PN 070



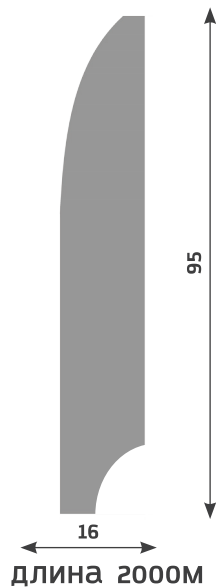
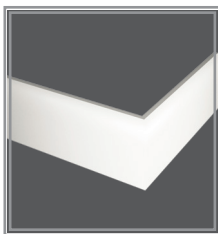
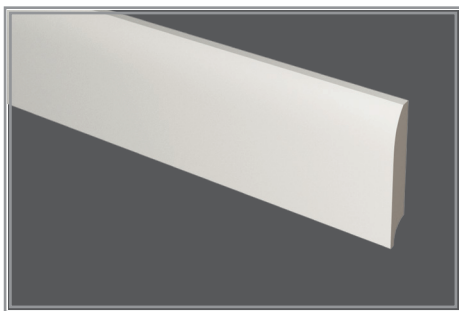
89

18

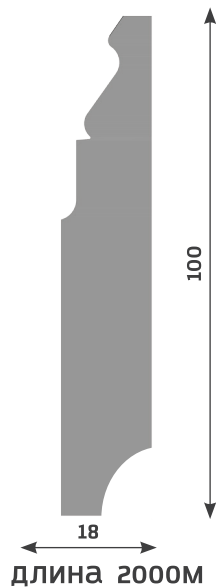
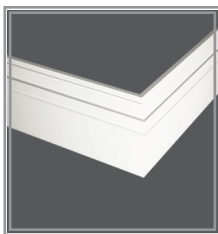
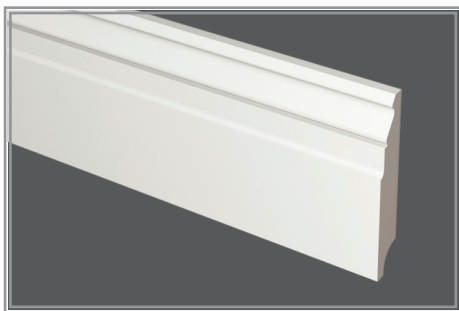
длина 2000М



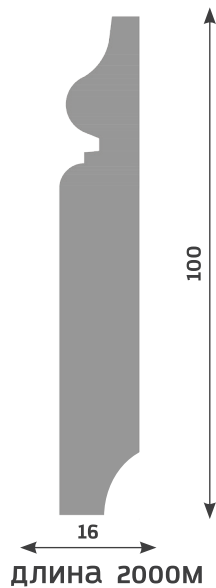
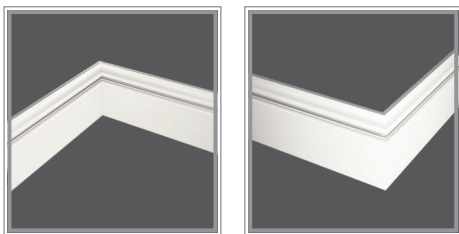
## •PN 080\* / \*имеет аналог LED /



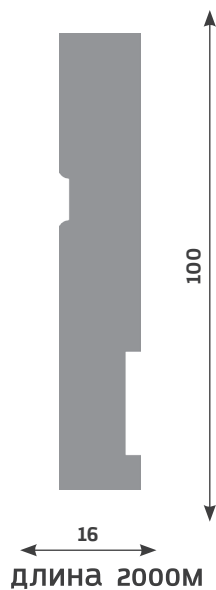
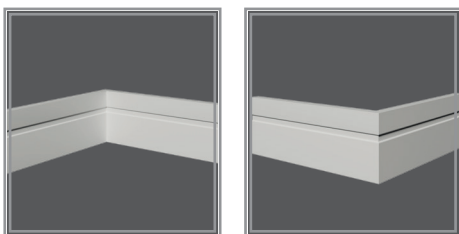
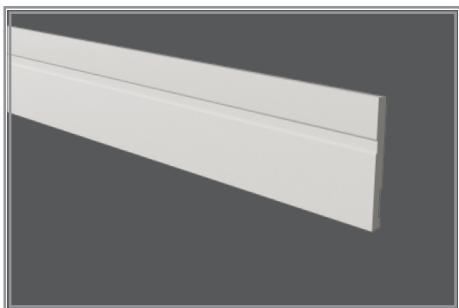
## •PN 090



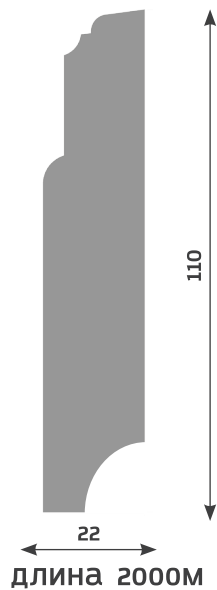
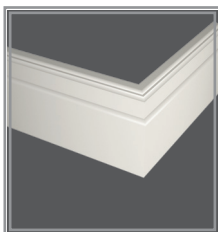
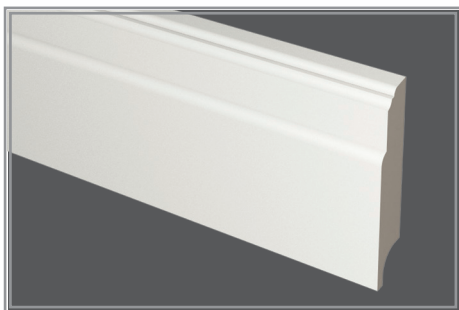
## ·PN 100



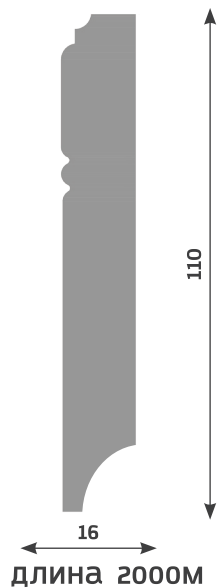
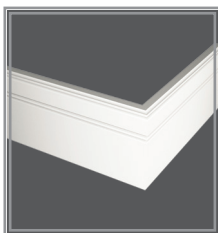
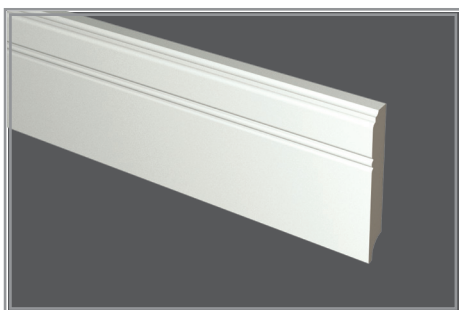
## ·PN 101\* / \*имеет аналог LED /



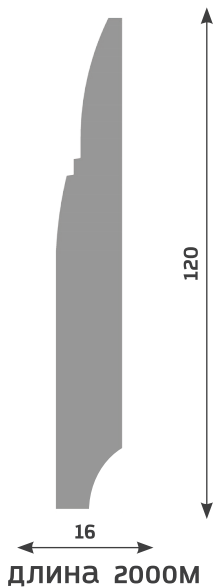
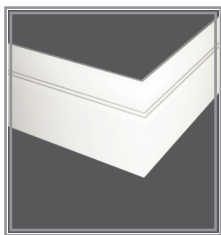
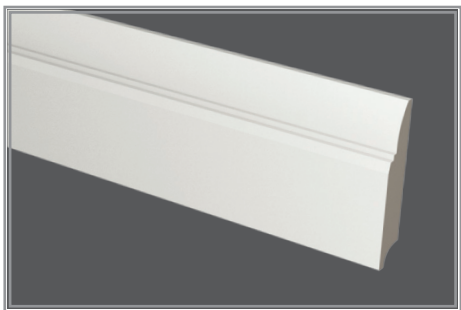
## ·PN 110



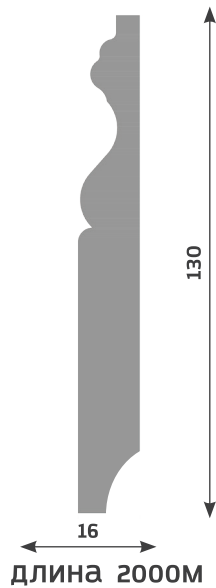
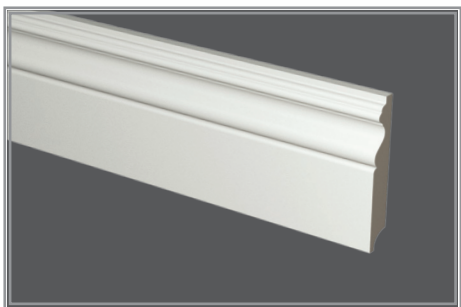
## ·PN 120\* / \*имеет аналог LED /



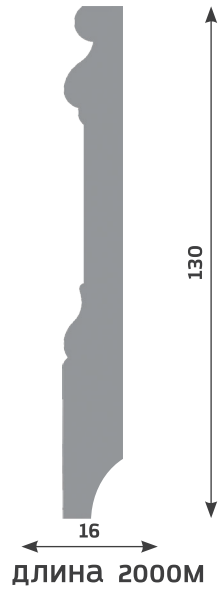
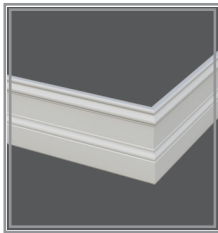
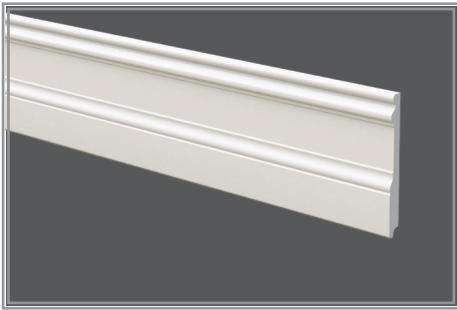
## ·PN 130



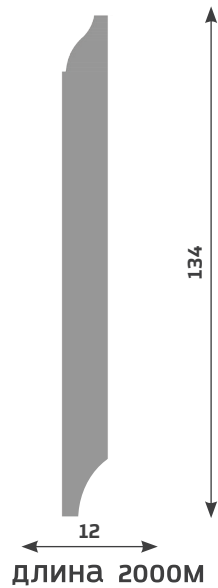
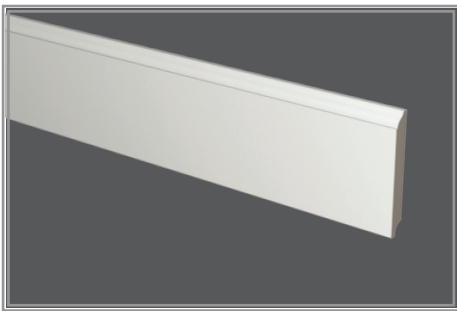
## ·PN 140



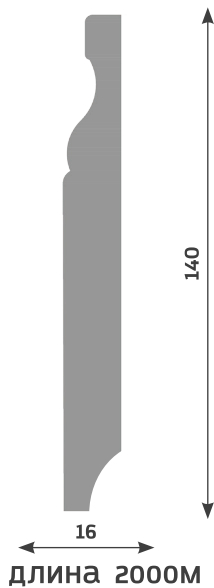
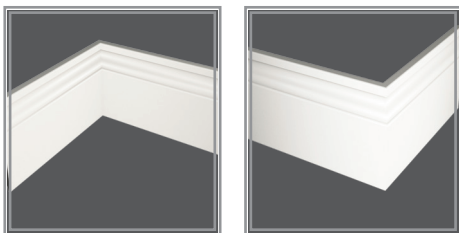
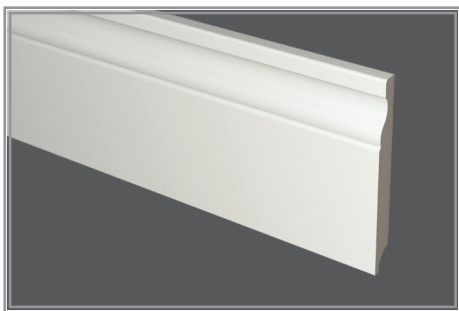
## ·PN 141



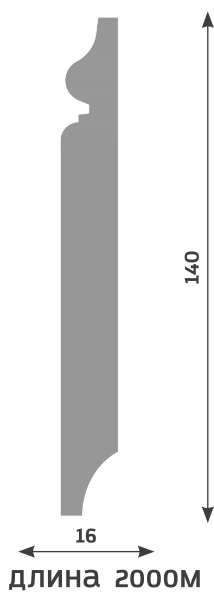
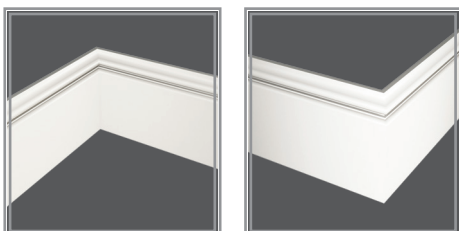
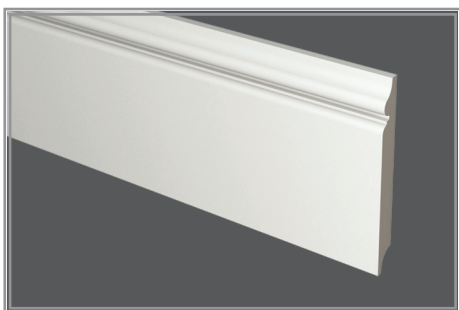
## ·PN 150



## ·PN 160

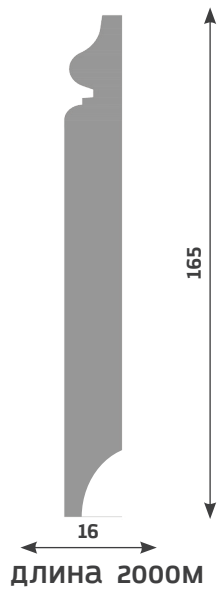
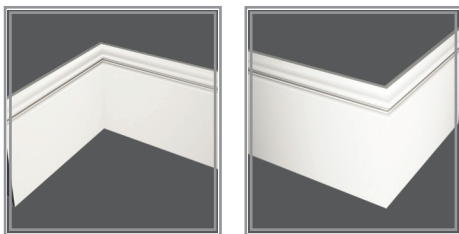
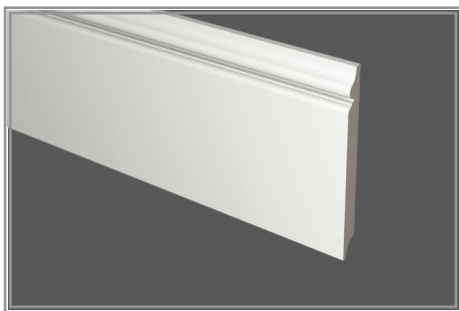


## ·PN 170

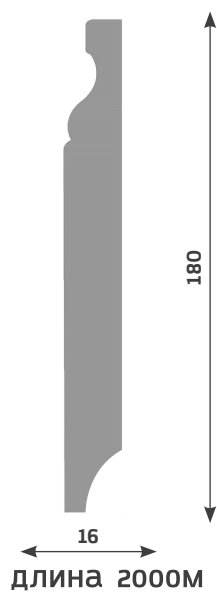
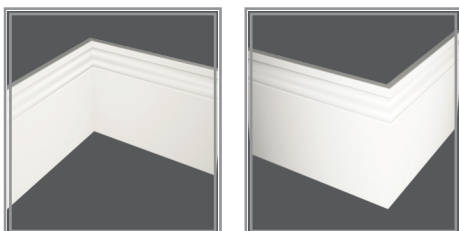
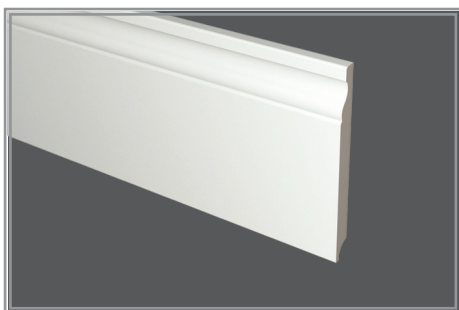




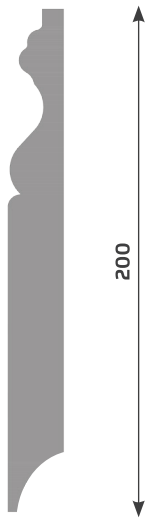
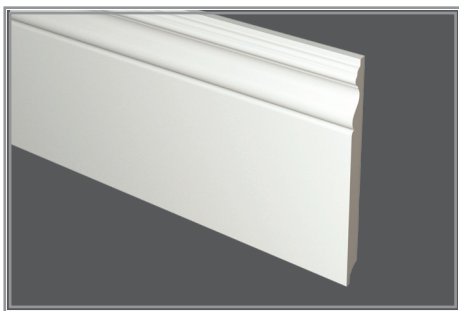
## •PN 180



## •PN 190



# ·PN 200



200

16

длина 2000М

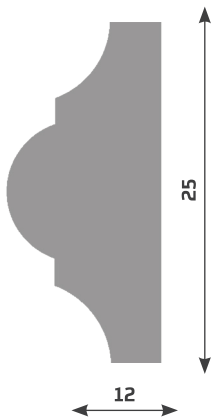
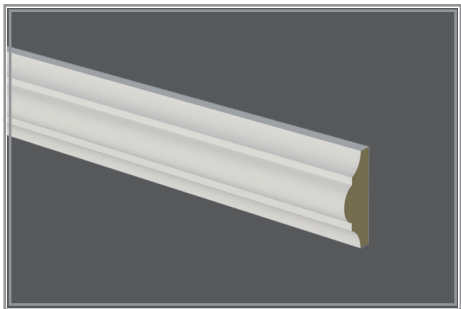




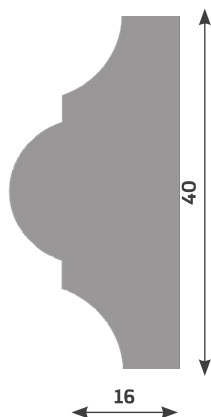
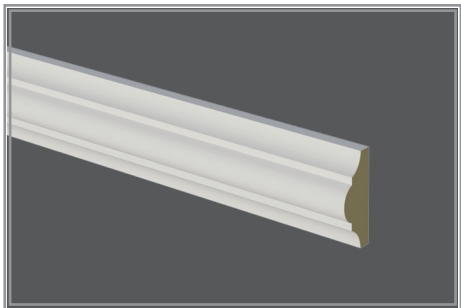
МОЛДАНЛИ

NEW  
COLLECTION

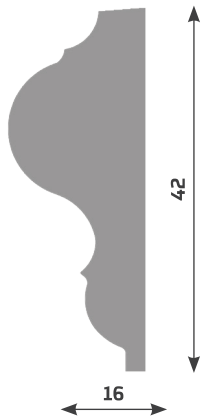
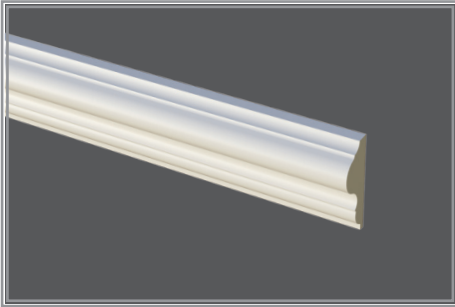
# ·M 01



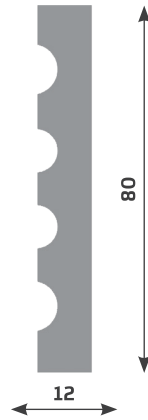
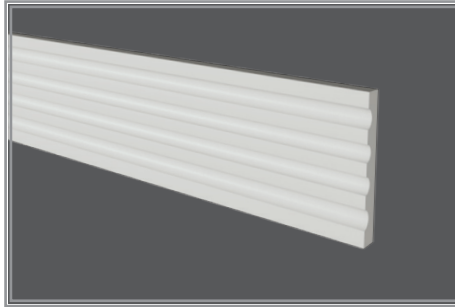
# ·M 02



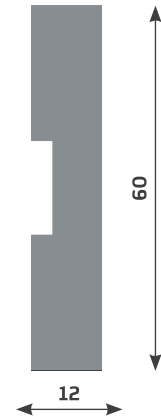
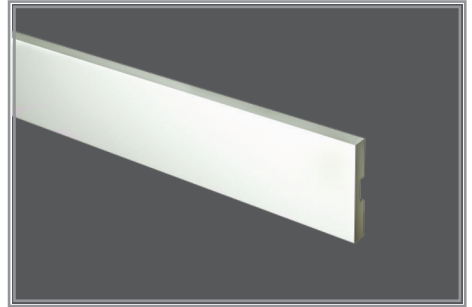
# ·M 03



# ·M 04



# ·M 05

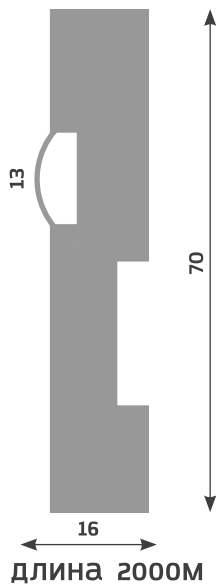
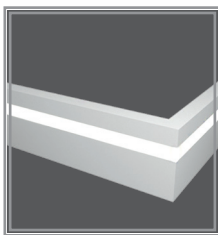
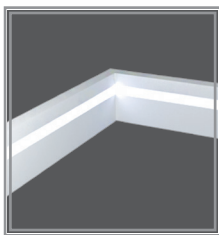
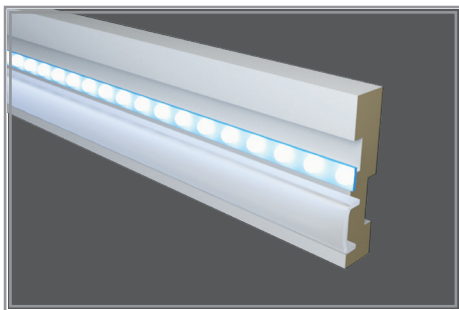


ПЛИНТУС С LED  
ПОДСВЕТКОЙ

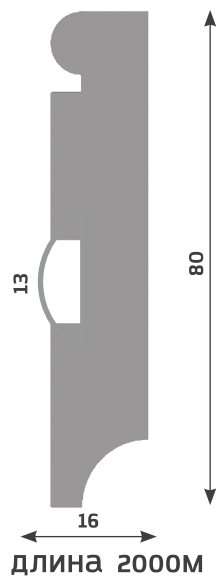
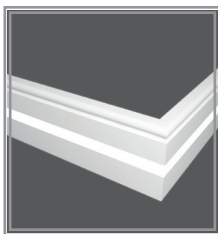
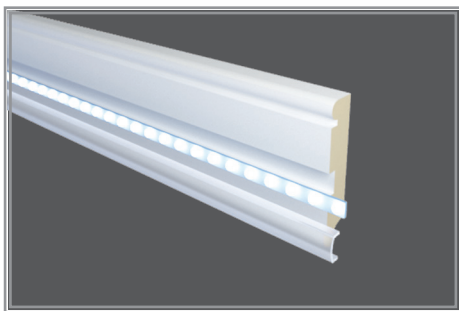
NEW  
COLLECTION



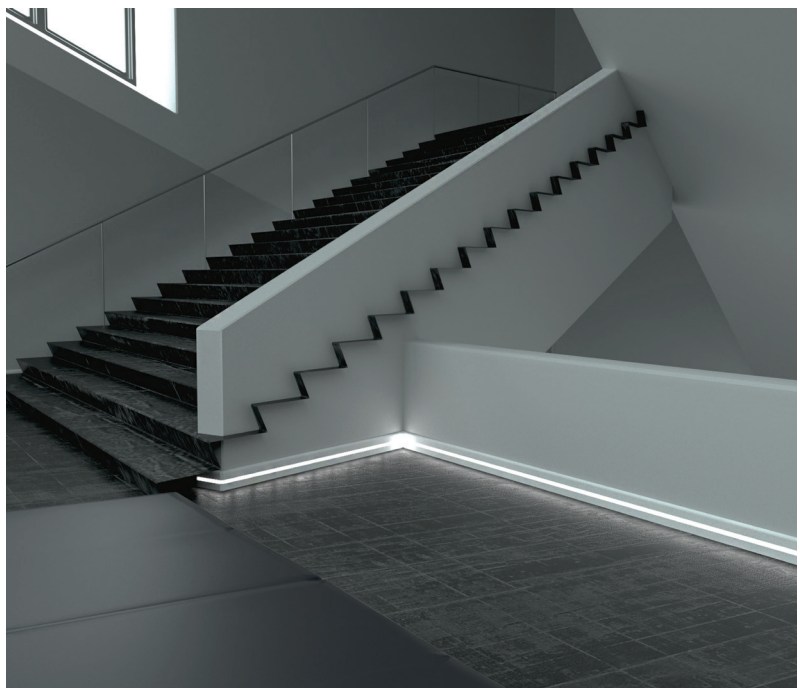
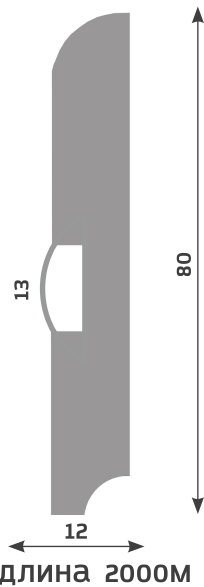
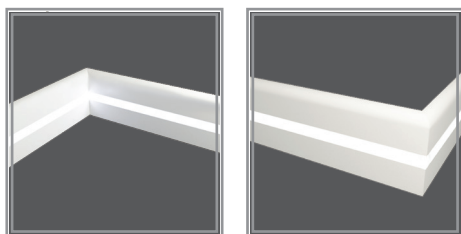
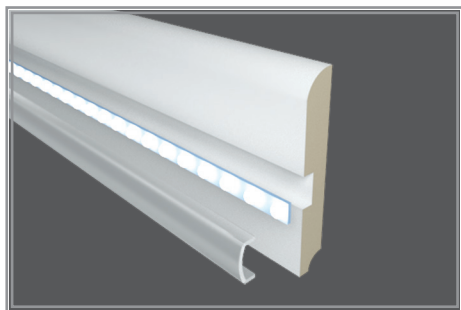
## ·PN 021 LED



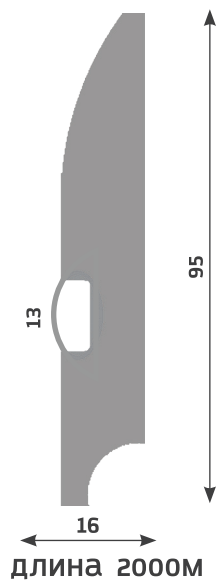
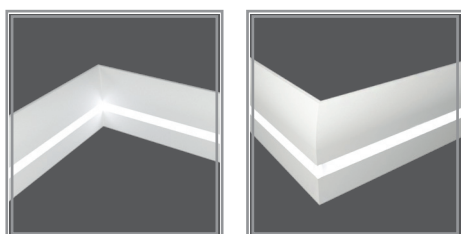
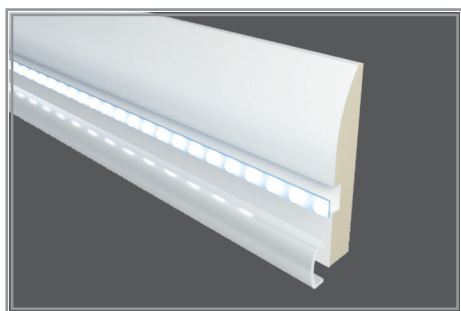
## ·PN 030 LED



## ·PN 050 LED

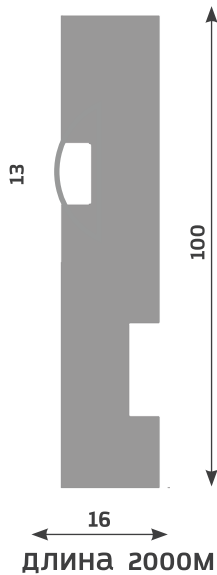
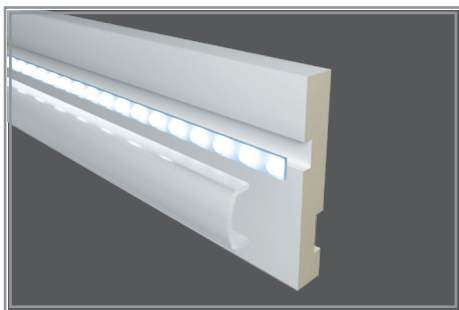


## ·PN 080 LED

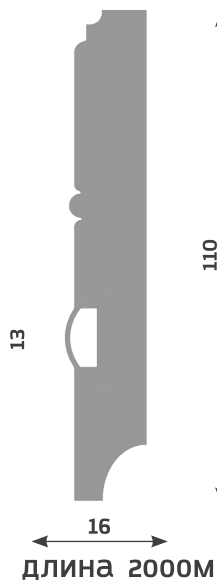
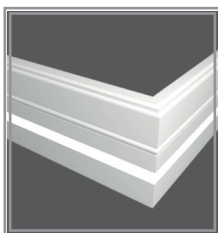
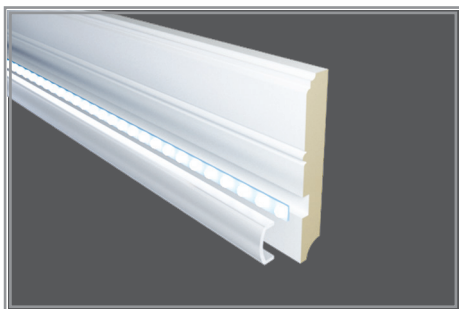




## ·PN 101 LED



## ·PN 120 LED

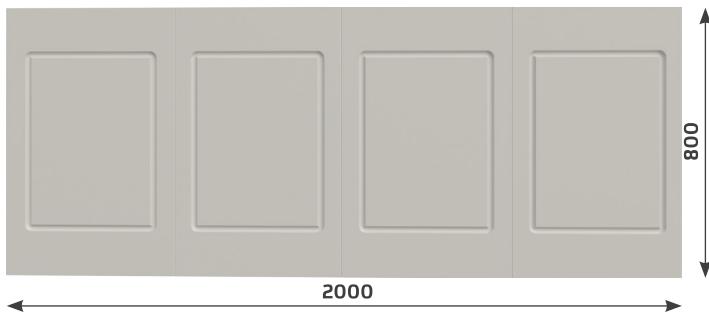


ПАНЕЛИ

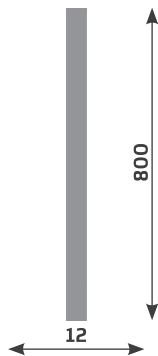
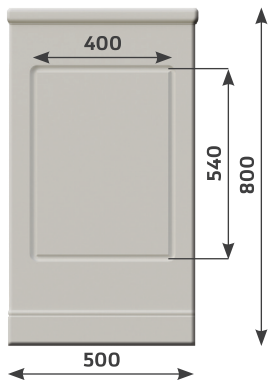
**NEW**  
COLLECTION



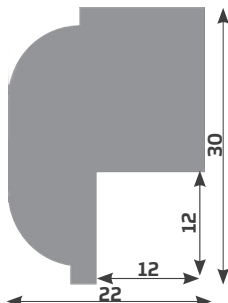
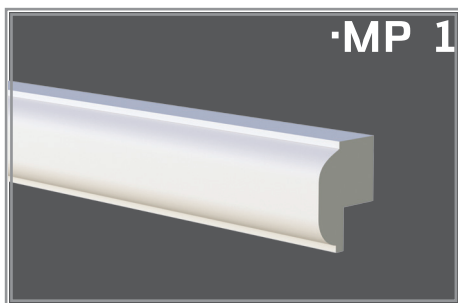
# ·PL 1



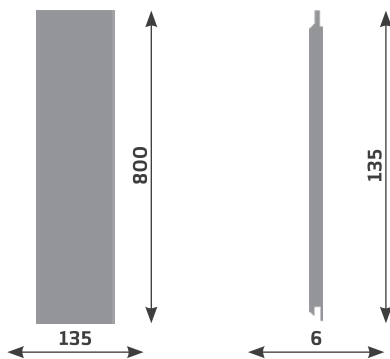
# ·PL 1-500



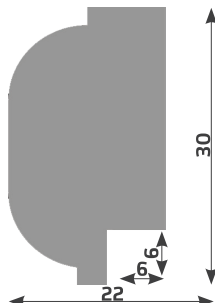
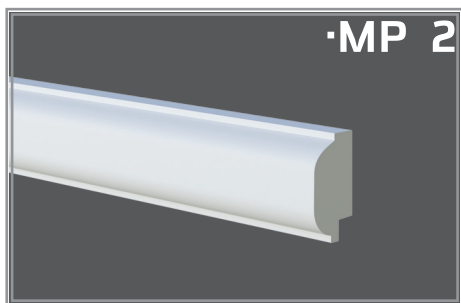
# ·ЗАВЕРШАЮЩИЙ МОЛДИНГ К ПАНЕЛИ



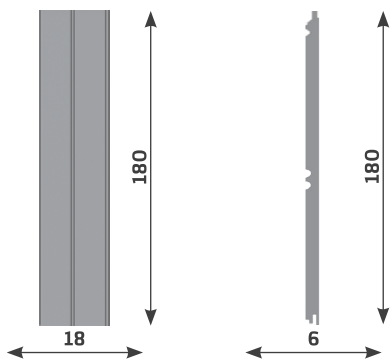
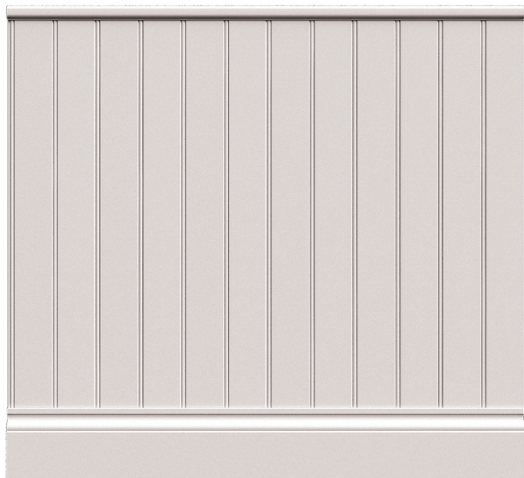
## ·PL 2



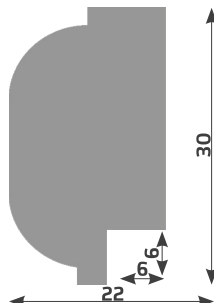
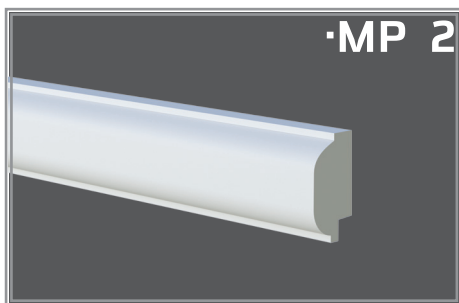
## ·ЗАВЕРШАЮЩИЙ МОЛДИНГ К ПАНЕЛИ



# ·PL 3



## ·ЗАВЕРШАЮЩИЙ МОЛДИНГ К ПАНЕЛИ

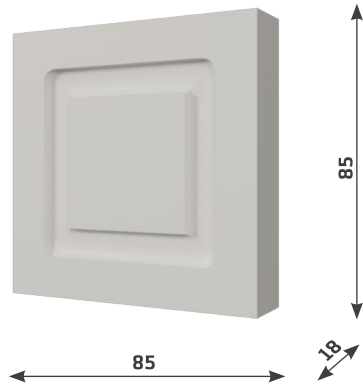


ОБРАМЛЕНИЕ

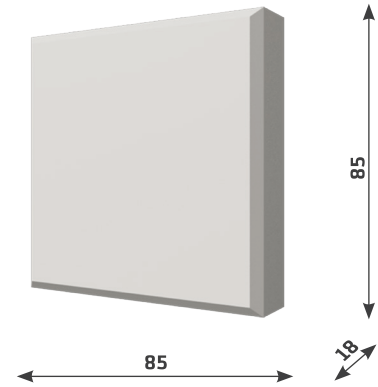
**NEW**  
COLLECTION



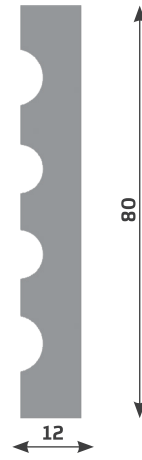
·K01



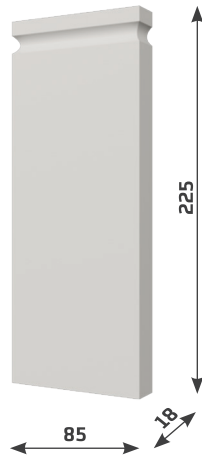
·K02



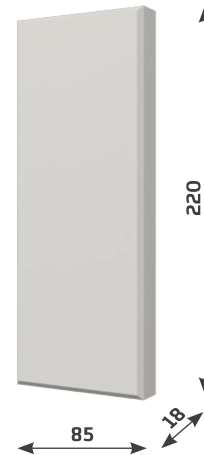
·M04



·Б01



·Б02



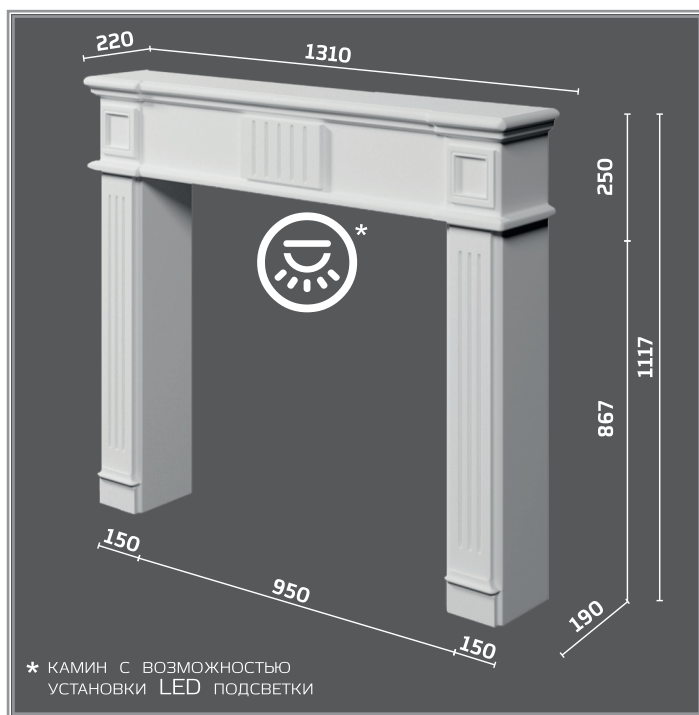
КАМИНЫ

NEW  
COLLECTION

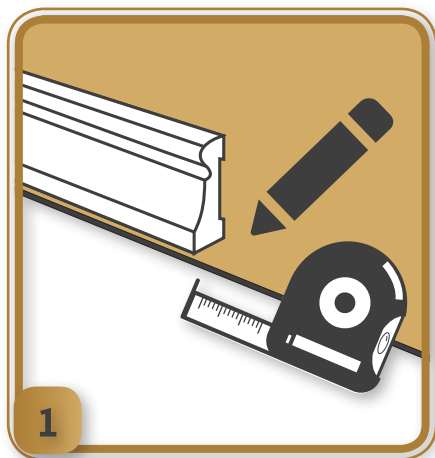




# ·KM 01 LED



# РЕКОМЕНДАЦИИ ПО МОНТАЖУ ПЛИНТУСА



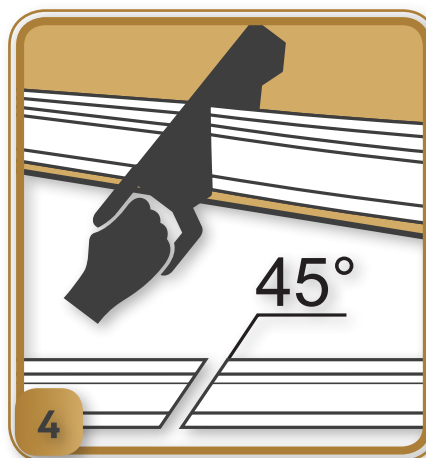
**ЗАМЕРИТЬ МЕСТО МОНТАЖА И ОТМЕТИТЬ НА ПЛИНТУСЕ.**



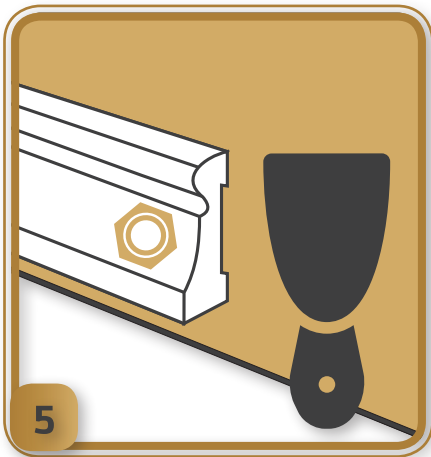
**Для запила плинтуса необходимо использовать стусло с ножовкой (мелким зубом) или торцевую пилу.**



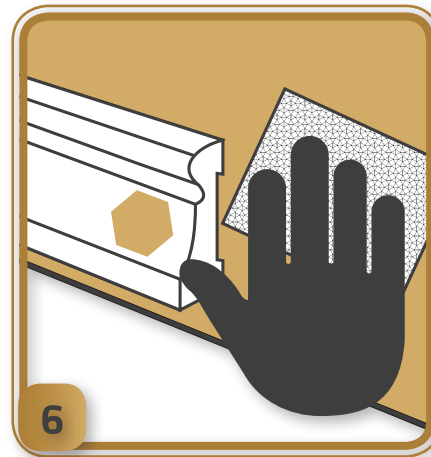
**МОНТАЖ ПЛИНТУСА МОЖЕТ ОСУЩЕСТВЛЯЕТСЯ ТРЕМЯ СПОСОБАМИ С ПОМОЩЬЮ ЖИДКИХ ГВОЗДЕЙ, ПНЕВМО ПИСТОЛЕТА, САМОРЕЗОВ.**



**КАЖДОЕ СОЕДИНЕНИЕ НА ПРЯМОЙ ПОВЕРХНОСТИ РЕКОМЕНДУЕТСЯ ЗАПИЛИТЬ ПОД 45 ГРАДУСОВ ДЛЯ НАИЛУЧШЕГО ПРИЛЕГАНИЯ.**



**При использовании пневмо пистолета и саморезов, места заглабления гвоздей и саморезов обработать шпатлевкой.**



**После высыхания шпатлевки обработать мелкозернистой наждачной бумагой.**



**Окрашивание производить валиком или пульверизатором.**



**Краски рекомендуются к нанесению акриловые, полиуретановые и на водной основе.**



DECOR  
GALLERY

Казань, ул. Калинина 60  
+7 (843) 590 12 77, 590 18 39  
[www.decorkazan.ru](http://www.decorkazan.ru)